



PARTS & REPLACEMENT SOLUTIONS

PARTS, EQUIPMENT & SUPPLIES



HAVTECH.COM

INNOVATIVE SOLUTIONS. EXCEPTIONAL SERVICE.

WE ARE HERE TO HELP

When you need aftermarket parts and equipment, you need a company you can rely on to provide quality products at an affordable price, and you need it to be all in one place. The Havtech Parts & Aftermarket Team offers the expertise to help whether you are installing, maintaining or upgrading any HVAC system.



Our fully stocked Parts Center will allow you to get to the jobsite or customer fast. Whether you need a new piece of equipment, an OEM part or general parts and supplies, we can get you on the road with only one stop.

We offer same day pick-up or next day delivery for orders placed before 2 PM.

For your convenience, we also offer same day delivery for orders placed within our same day delivery zone. Please call for details.

BUSINESS HOURS

Monday – Thursday: 6:30 AM – 4:30 PM

Friday: 6:30 AM – 4 PM

TWO LOCATIONS TO SERVE YOU

Columbia Parts Center

9505 Berger Road
Columbia, MD 21046
240.568.0960
parts@havtech.com

Capitol Heights Parts Center

1101 Hampton Park Blvd, Suite 400
Capitol Heights, MD 20743
240.547.0287
capitolheights@havtech.com



AFTERMARKET & REPLACEMENT PARTS

Compressors	6
Motors	7
Capacitors	7
Blades	7
Controls/Controllers	8 - 9
Belts	10
Hoses	10
Filters	10
Electrical	11
Tools	11
Thermostats	12
Refrigerant	13
Chemicals	13

AFTERMARKET EQUIPMENT

PTACs	14 - 16
Water Source Heat Pumps/Splits	16 - 17, 20 - 21
Ductless Split Systems	18
Fan Coils	19, 22 - 23
Induction Units	23
Humidification	24
Variable Frequency Drives	25

COMMERCIAL HVAC SYSTEMS

Rooftops & Split Systems	26
Rooftop Systems	27
Chillers	28
VRV® Systems	29

OEM PARTS & EQUIPMENT PROVIDER

REPLACEMENT PARTS AVAILABLE FOR
THE FOLLOWING BRANDS:

AAON
ABB
AMANA
AMERICAN AIR FILTER
ANNEXAIR
CAREL USA
CARRIER
CLIMATE MASTER
COLD POINT
CNI/COMITALE NATIONAL
DADANGO
DAIKIN APPLIED
DAIKIN COMMERCIAL
DATA AIRE
ENERCON
FLORIDA HEAT PUMP/BOSCH
FRIEDRICH
GENERAL ELECTRIC
HERMAN-NELSON
HEIL QUAKER
ICECAP
ICE
IEC
ISLANDAIRE
NORTEC HUMIDIFIERS
PENNBARRY
POOLPAK
PRICE
REMINGTON
SERESCO
SINGER
TANDEM CHILLERS
TECOGEN
TEMPMASTER
TRANE
UNITED COOLAIR
WATTMASTER/ORION CONTROLS
ZEHNDER RITTLING
ZONEAIRE





REPLACEMENT EQUIPMENT AVAILABLE FOR THE FOLLOWING BRANDS:

AAOB
 ABB
 AAF/HERMAN NELSON
 AMANA
 AMERICAN ALDES
 AMERICAN STANDARD
 ANNEXAIR
 APPLIED COMFORT
 BROAD
 CAREL USA
 CARRIER
 CLIMATE MASTER
 GOLD POINT
 CNI
 DAIKIN APPLIED
 DAIKIN COMMERCIAL
 DATA AIRE
 DES CHAMPS TECHNOLOGIES
 DETRON
 DUNHAM BUSH
 EATON CUTLER HAMMER
 ENERCON
 ENERGY LABS INC.
 FLORIDA HEAT PUMP/BOSCH
 FRIEDRICH
 GENERAL ELECTRIC
 GOODMAN
 HEIL QUAKER
 ICE
 IEC
 ISLANDAIRE
 KRUEGER
 MCQUAY
 MUNTERS
 NESBITT
 PENNBARRY
 PRICE
 REFLOK
 RETROAIRE
 REMINGTON
 SERESCO
 SINGER
 TRANE
 TANDEM
 UNITED COOLAIR
 ZEHNDER RITTLING
 ZONEAIRE

Full Line of Compressors in Stock

ALL
ITEMS IN
STOCK



Scroll



Semi-Hermetic



Rotary



Hermetic



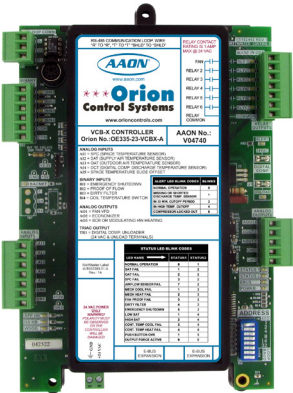
OEM & non-OEM Replacement Experts

ALL
ITEMS IN
STOCK





The **WattMaster Orion Control Systems Controller** was developed to provide a powerful yet simple control solution for AAON equipment. The VCM-X, VCB-X, and VCC-X allow users to take full advantage of AAON exclusive features without the additional cost or complexity of designing a unique control strategy for each job.



The VCM-X Controller

- 7 analog inputs, 2 analog outputs, & 5 relay outputs.
- Configurable for control of VAV Units (with or without VAV/Zone Controllers), Constant Volume Units, & Make-up Air Units.
- Most common HVAC unit control applications can be configured using only the VCM-X Controller.



The VCB-X Controller

- 5 analog inputs, 3 analog outputs, 1 triac output, 4 binary inputs, & 6 relay outputs.
- On-board BACnet® port for connection to a MS/TP network.
- Provides for Constant Volume, VAV, Single Zone VAV, Make-up Air, & Air-Source Heat Pump applications.
- Most common HVAC unit control applications can be configured using only the VCB-X Controller.



**ALL
ITEMS IN
STOCK**

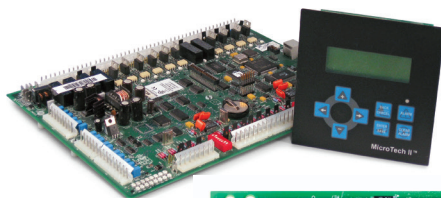
Daikin focuses on providing superior value in HVAC equipment and easy integration with your building automation system (BAS) of choice through proactive testing with BAS suppliers, integration support for the life of our HVAC equipment, and strict compliance with BACnet® and LonTalk® protocols.

Optional communications modules plug into chiller, rooftop, self-contained and unit ventilator controllers to communicate with the building automation system.

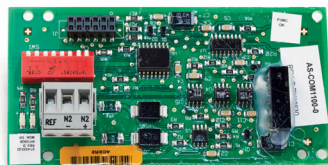
MicroTech II & III are compatible with all open standard protocols.



**MicroTech III
controls for chillers
& condensing units.**



**MicroTech II controls for
rooftop & self-contained units.**





Tri-Power® Belts

Constructed for a superior combination of flex and load carrying capacity, as well as less stretch resulting in less maintenance.

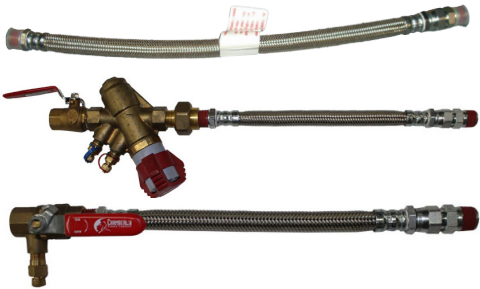


ALL
ITEMS IN
STOCK

Water Source Heat Pump Hoses



Superior Flexibility
UL-94 V0 Fire Rating
Washerless Design
Buy American Compliant



Fire rated hose with solid male pipe thread on one end and male pipe swivel on the other. Hose Sizes: 1/2" to 1" in stock. Hoses in custom lengths as well as 1 - 1/4" to 2" diameter are available upon request. For use in water source heat pump, fan coil or chilled beam applications.



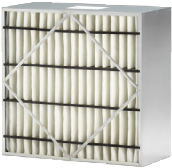
Havtech carries disposable filters in various widths/lengths/depths/ minimum efficiency rating values (MERV).



StrataDensity® Panel Filters



PerfectPleat® SC M8



VariCel® RF NH



VariCel® II



ALL
ITEMS IN
STOCK



Time-Delay Fuses



Motor Capacitors



Relays & Contactors



Transformers



Large Selection of Tools

Featuring Klein Tools, Yellow Jacket, Fieldpiece & more!



ALL
ITEMS IN
STOCK

We proudly offer Honeywell Thermostats & Accessories

Honeywell is the top choice in thermostats worldwide.

New Features:

- The latest Wi-Fi enabled thermostats, controlled from a smartphone, tablet or computer
- RedLINK™ thermostats & accessories include:
 - Remote temperature sensors
 - Internet gateway
 - Remote control





Competitive Pricing Available

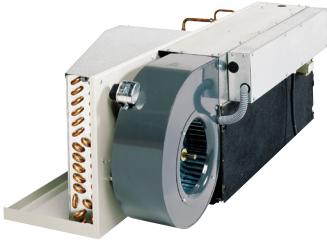
**ALL
ITEMS IN
STOCK**

- R-410A, R-407C, R-22, R-134a available
- R-22 & R-134a available in 30 & 125 lbs. cylinders
- R-410A & R-407C available in 25 lbs. cylinders



Nu-Calgon is an industry-leading provider of specialty chemicals to the HVAC/R market. When quality matters, go with Nu-Calgon.





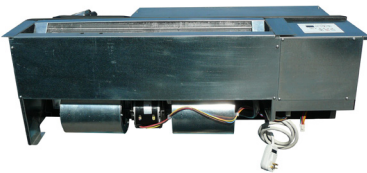
Chromalox™ Space Command

- High energy efficiency
- Long reliable service life
- Premium components for reliability & durability



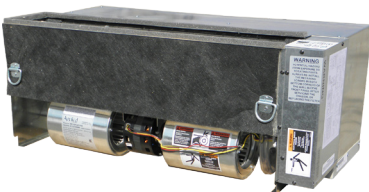
i42 Inverter

- Energy savings of up to 30%
- Inverter technology compressor
- Dramatic sound reduction



Applied Comfort RS Unit

- New high performance design
- Energy efficient
- Quiet
- Durable



Series 16/AAF/PNES Replacement

- Redesigned in 2014
- Quieter
- More efficient
- Electronic Touchpad Controls, switchable to wall thermostat & EMS



Applied
COMFORT



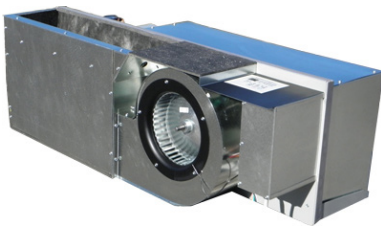
Type K Replacement

- Complete one piece replacement – includes controls
- Electronic Touchpad Controls, switchable to wall thermostat & EMS
- Direct slide into existing wall sleeve



Applied Comfort 32" DMQ

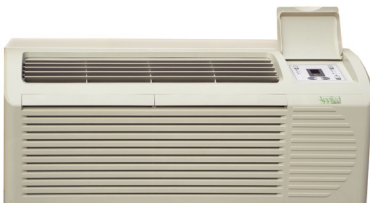
- Premium component design with digital controls
- Front desk & energy management system ready
- Switchable to 24V remote thermostat



Applied Comfort EA Unit

- Energy efficient
- Very quiet
- High performance
- Easy installation

**IN
STOCK
ITEMS**



16" x 42" Calm Series

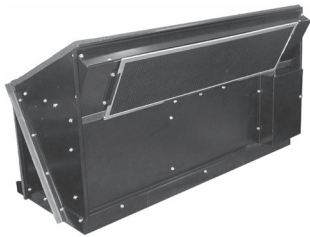
- Incredibly quiet indoor sound
- Electronic temperature limiting
- High efficiency

WATER SOURCE HEAT PUMPS & PTACs



801 Series

- Direct replacement for the Climate Master/ Friedrich '801' series
- Available as chassis only for existing & custom room cabinets. New cabinet also available for complete installation.
- Available in sizes 8,000 BTU to 19,000 BTU
- Offered in 115V, 208/230V, & 265/277V
- Chassis provides quiet, environmentally friendly, high efficiency, ductless cooling & heating where individual control is a priority



EK Series

- Direct replacement for the Remington/Singer/ McQuay 'K', IslandAire 'KF' & RetroAire 'RC 60' series
- Available in sizes 9,000 BTU, 12,000 BTU, & 14,000 BTU
- Offered in 115V, 208/230V, & 265/277V
- Chassis provides quiet, environmentally friendly, high efficiency cooling & heating where individual control is a priority

IN
STOCK
ITEMS



WPV Series

- Direct replacement for the Command-Aire 'WPV' & Trane 'WPR' series
- Available in sizes 10,000 BTU to 33,000 BTU
- Offered in 115V, 208/230V, & 265/277V
- Chassis provides quiet, environmentally friendly, high efficiency cooling & heating where individual control is a priority

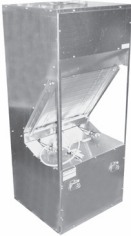


WM Series

- Direct replacement for the Singer/McQuay 'WMB' series
- Available in sizes 8,000 BTU to 18,000 BTU
- Offered in 115V, 208/230V, & 265/277V
- Reversible
- Ideal choice for renovation or new construction console water source heat pump projects
- Chassis provides quiet, environmentally friendly, high efficiency, ductless cooling & heating where individual control is a priority



**ALL
ITEMS IN
STOCK**



VF Series

- Direct replacement for the Singer/McQuay VF/VP/VG units
- Available in small & large frame (10,000 BTU to 40,000 BTU)
- Comes in 115V, 208/230V, 265/277V, 208V-3PH, & 460V-3PH
- Chassis provides quiet, environmentally friendly, high efficiency cooling & heating where individual control is a priority



HCA/HCC Series

- Direct replacement for the Singer/McQuay 'HC/EH' models
- Available in sizes 7,000 BTU to 24,000 BTU
- Offered in 115V, 208/230V, & 265/277V
- Chassis provides quiet, environmentally friendly, high efficiency cooling & heating where individual control is a priority



816 Series

- Direct replacement for the California Heat Pump 'CHP-RF' model & the Climate Master '816' model
- Available in sizes 10,000 BTU to 36,000 BTU
- Offered in 208/230V, & 265/277V
- Different control options available
- Chassis provides quiet, environmentally friendly, high efficiency cooling & heating where individual control is a priority



VI Series

- Direct replacement for the Whalen 'VI' units
- Available in sizes 300 to 800 CFM
- Offered in 115V, 208-230V, & 265-277V
- Chassis provides quiet, environmentally friendly, high efficiency cooling & heating where individual control is a priority

DUCTLESS SPLIT SYSTEMS



ALL
ITEMS IN
STOCK

Daikin's Multi-Split Systems are ideal for multi-room applications providing individual room comfort in a space-saving design. With the ability to connect 2 - 8 indoor units to a single outdoor unit, over 1,000 combinations are possible with the choice of wall mount units, slim duct units, or ceiling cassette units. Systems offer energy efficiency levels up to 18.9 SEER and 12.5 HSPF for enhanced home comfort and energy savings.



Split Systems Individual Zone Controls

With Daikin's super-intelligent, user-friendly system controllers, you can create Absolute Comfort™ quickly and easily. Their advanced functionality and easy-to-read liquid displays (LCDs) allow you to orchestrate and monitor temperature, time, airflow volume and more across your entire system at the touch of a button.



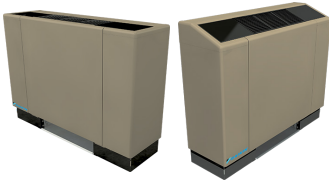
Navigation Remote Controller - BRC1E73

- Can be used with: All VRV® indoor units & the FAQ, FBQ, FCQ, FHQ, FTQ SkyAir indoor units
- Easy-to-read LCD screens
- Optional Face Plates available to hide unnecessary (locked/prohibited) buttons



Wireless Remote Control – BRC4C

- Up to 16 indoor units can be controlled simultaneously
- VRV Controls Network supports operation monitoring, scheduling, error e-mail distribution, general user software, tenant billing, & maintenance support



ThinLine Vertical Fan Coils

Seven unit sizes from 200 to 1,200 CFM

- 2 & 4-pipe configuration
- Electric heat, total or auxiliary



ThinLine Horizontal Fan Coils

Seven unit sizes from 200 to 1,300 CFM

- 2 & 4-pipe configuration
- 2, 3 & 4-row primary coil option
- Electric heat, both total & auxiliary



Vertical Stacked Fan Coils

Four unit sizes from 300 to 800 CFM, blow-through configuration

- Low cost installation
- Low maintenance & operating conditions
- Highly efficient & quiet performance



Enfinity™ Console Water Source

- Exceeds ASHRAE 90.1 efficiency standards by up to 35%
- Models MHC/MHW
- R-410A Refrigerant
- Also available in flat-top



Enfinity™ Horizontal Water Source

- Model CCH Standard Range
- Model CCW Geothermal Range
- Unit sizes 007 – 060 (½ to 10 tons)
- R-410A Refrigerant



New! SmartSource Compact Vertical

- Compact design
- Unit sizes 007 – 070 (½ to 6 tons)
- R-410A Refrigerant



LV Model Water Source Heat Pump

Vertical Configurations In Stock

- One of the most compact cabinets available
- Horizontal & vertical configurations; ½ ton to 6 tons
- Efficient, quiet, & reliable
- Sound package designed to remove vibration & reduce noise
- Performs well in both water loop (up to 5.3 COP) & geothermal applications (up to 16.9 EER)



EC Model & Split Systems

- Large water source heat pumps & split systems
- Two-stage compressor power that brings high efficiency to any commercial building
- Horizontal & vertical configurations; from 6 to 30 tons
- Best combination of comfort, performance, & increased flexibility for installation



CA Model Water Source Heat Pump

- Slope top only console unit from ¾ ton to 1 ½ tons
- Provides exceptional heating & cooling where space/access is limited
- Double isolated compressor ensures quiet comfort
- Ideal for hotels, office buildings, schools, & assisted living complexes





Modular High Rise Series: MPY/MXY/MRY

- 300 to 1200 CFM
- Return air panel provides easy access to all internal components & filters
- Wide variety of coil configurations
- Factory-installed control valves with quick-connect actuators



Vertical Series: FXC/FSY/FXY

- 200 to 1200 CFM
- Preamsembled valve packages to minimize piping work
- 2 & 4-pipe configuration
- Several cabinet types for many applications
- Lowboy options available



Horizontal Series: CPY/CHY/CXB/CBY

- 200 to 1200 CFM
- Multiple cabinet choices available
- Availability of exposed & hideaway models
- UL rated & AHRI certified



Vertical Series: FF/FS

- 200 to 1200 CFM
- Preassembled valve packages to minimize piping work
- 2 & 4-pipe configuration
- Several cabinet types for many applications
- Lowboy options available



Vertical Hi Stack Fan Coils

- Available in unit sizes 03-12
- Designed with custom build capabilities minimizing additional maintenance expenses
- Units are shipped fully assembled with insulated risers attached, electrical components pre-wired, & control valves pre-piped



Induction Units

- Water units with quiet operation
- 2 & 4-pipe configuration
- Low profile wall hung, vertical wall hung & ceiling mount options available
- No moving parts, reducing the required maintenance

CAREL



compactSteam

- Disposable steam cylinder
- Communication & alarm output connections
- Comprehensive control with Clima Thermostat-Humidistat
- Built-in drain tempering



humiSteam "H" Series

- Disposable steam cylinder
- Patented Anti-Foaming System (AFS)
- Drain cycle controlled by water conductivity
- Wide range of voltages & capacities



humiSteam UEX

- Range from 3.3 to 286 lbs/hr, new 40 lbs/hr
- Large alphanumeric/backlit graphic display
- User interface can be mounted remotely
- Automatic water concentration management



Daikin Variable Frequency Drives

- Two built-in PID controllers
- Real time clock and calendar
- Harmonic mitigation built-in
- 208V, 460V, Base or with Bypass



Honeywell Variable Frequency Drives

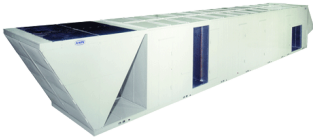
- Ideal for retrofit applications
- Class 2 EMC Filter Available
- 105V-500V 1ph/3ph



RN Series

Capacities from 6 to 140 tons

- Air-cooled condenser or air-source heat pump packaged DX Rooftop Units
- Make-up air capability, up to 100% outside air
- Variable capacity R-410A scroll compressors (10-100%) for load matching



RL Series

Capacities from 45 to 240 tons

- Air-cooled, water-cooled, or evaporative-cooled condenser packaged DX Rooftop Units
- Make-up air capability, up to 100% outside air
- Magnetic bearing R-134a centrifugal compressor option



RQ Series

Capacities from 2 to 6 tons

- Air-cooled condenser packaged DX rooftop units
- Make-up air capability, up to 100% outside air
- Variable capacity & two step R-410A scroll compressors



H3 / V3 Series

- Horizontal or vertical air handling unit with chilled water or R-410A direct expansion (DX) cooling coils from 450 to 10,000 CFM
- Split system heat pump with air-source, water-source & geothermal configurations
- Make-up air capability, up to 100% outside air
- VAV & single zone VAV capability



Roofpak® Model RPS

Capacities from 15 to 150 tons

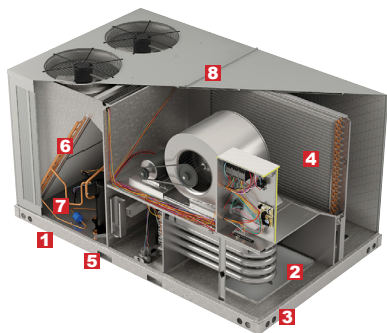
Rebel® Model DPS

Capacities from 3 to 28 tons

Maverick® II Model MPS

Capacities from 15 to 75 tons

- 100% dedicated outdoor air
- Dehumidification
- VAV or Constant Volume
- Optional energy recovery wheel



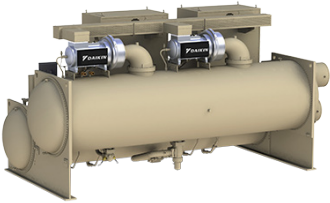
1. Footprint fits many existing curbs without curb adaptor (3 to 12½ tons)
2. Tubular heat exchanger with wrinkle-bend technology
3. Full-perimeter base rail with fork slots on all four sides (up through 12½ tons)
4. Copper tube/aluminum fin evaporator coil

5. Energy-efficient scroll compressor
6. SmartCoil™ 5mm condenser coil (in select models)
7. Factory-installed, (steel-caged) filter driers
8. A cabinet made of heavy-gauge galvanized steel

OUTSTANDING LIMITED WARRANTY* PROTECTION



* Complete warranty details available



Magnitude® Bearing Chiller

Capacities from 100 to 1500 tons

- Sound Pressure Ratings as low as 76 dBA
- Ideal for schools, museums & condominiums
- Oil-free design



Pathfinder® Air Cooled Chiller

Capacities from 170 to 550 tons

- Most efficient full load & part load operation, up to 19.4 EER
- Quietest un-attenuated sound levels published, as low as 66 dBA
- Largest capacity air-cooled screw chiller, up to 550 tons



Trailblazer® Air Cooled Scroll Chiller

Capacities from 30 to 240 tons

- Sound pressure ratings as low as 60 dBA
- Exceeds ASHRAE Standard 90.1 2013 & FEMP 2012 standards
- RapidRestore™ feature design is ideal for hospitals & data centers
- Compact unit footprint saves on installation space & cost



Centrifugal Single & Dual Compressor Chiller

Capacities from 200 to 2,700 tons

- Quiet compressor design with unique refrigerant injection system to absorb sound energy
- Positive pressure design with R-134a refrigerant
- Smallest footprint per ton
- Touch screen operator panel
- Seismic compliance option for both IBC seismic certification standards & OSHPD pre-approval



From one to one solutions for single room enhancements to multi-zone solutions for flexibility in a space saving design, split systems provide comfort for almost any residential application. As a global leader and innovator, Daikin provides home comfort solutions designed for energy efficiency, built-in reliability, and individual temperature control.



**ALL
ITEMS IN
STOCK**

VRV IV S-series

Ideal for residential or light commercial, VRV-IV-S features Daikin VRT refrigerant temperature control for optimized efficiency and comfort. Now completely re-designed in 25% smaller and 60% lighter 3 & 4 ton “suitcase” sizes, plus a new 5 ton model, with up to 10 connectable indoor units, VRV-IV-S is protected by Daikin’s 10-year all parts warranty.

VRV IV

Designed for large commercial applications, VRV-IV systems are available in up to 34 tons in heat pump or 38 tons in heat recovery. With the ability to operate up to 62 indoor fan coil units on a single system, the VRV-IV provides excellent part load performance in a modular centralized system.

VRV IV W Series Water Cooled System

Great for both light and large commercial applications, the VRV-WIV provides cold climate capabilities in a lightweight, compact design. Available as a unified heat pump or heat recovery solution, VRV-WIV offers an energy saving alternative to centralized systems. It also features a default variable refrigerant temperature for optimal life cycle costs.



A collection of various HVAC and refrigeration components, including compressors, condensers, evaporators, fans, and refrigerant cylinders, arranged on a white background.

30

NEW PRODUCT ANNOUNCEMENT



RAPID WALKWAY

- Fast install
- Various length rails available from stock
- Non-penetrative recycled Fix-it Foot
- Non-slip GRP walkway
- Flat packed for ease of handling

KIT INCLUDES:

- Fix-it Foot 1000 feet
- Grating
- Assembly Instructions

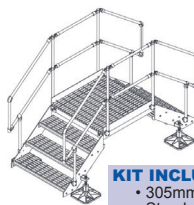
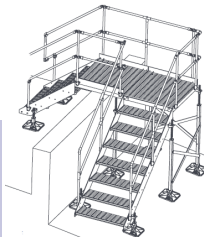


FIX-IT FOOT The Rapid Walkway systems use the UV stable Fix-it Foot as a neat and tidy support solution, made from durable recycled rubber. **PLEASE NOTE:** Quantities and sizes within the kit vary depending on the size of walkway required.

CUSTOM ACCESS

- Flat packed for ease of handling
- Adjustable leg length
- Custom design to suit all applications
- Site surveys as required

Custom Safe Access Big Foot Systems offer a comprehensive range of Safe Access solutions, which are ideal for a wide range of commercial and industrial applications. Offering secure and easy access to roof-top services, Big Foot's Safe Access systems provide standard site-assembled, safe access walkways, platforms and step overs. In addition, Big Foot will survey and design custom Safe Access systems tailored specifically to meet individual design parameters.



STEP OVER

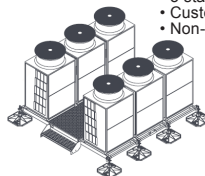
- Flat packed for ease of handling
- 3 different step options
- 1m landing
- Adjustable leg height
- Standard sizes stocked

KIT INCLUDES:

- 305mm leg assembly & rubber mats x 4
- Step handrail x 4
- Step stringers x 4
- Step grating x 2/3/4
- Landing grating x 1
- Landing kickplates x 2
- Landing handrails x 2
- Fixings and assembly instructions x 1

PLANT DECK FRAME

- Fast install
- 3 standard sizes in stock
- Custom design to suit all applications
- Non-slip GRP walkway



KIT INCLUDES:

- Adjustable Leg Assemblies
- End & Cross Bars
- GRP Grid
- Clamp Kits



**BIG FOOT
SYSTEMS**

NOW AVAILABLE! NON-PENETRATIVE ROOFTOP BUILDING SERVICES SUPPORT SYSTEMS

Officially Endorsed By **DAIKIN**

BIG FOOT SYSTEMS PRODUCT RANGE

SERVICES SUPPORT

With the main plant positioned upon the roof, there is generally a need to install associated auxiliary services. Service containment such as duct, pipework and cable ladder/tray can be supported using a number of auxiliary support products from our Services Support range.

TYPICAL APPLICATIONS

- Pipework
- Duct Runs
- Cable Ladders
- Cable Trays
- Modular Cable Management Systems
- Supply & Extract Fans
- Attenuators
- Filters

FEATURES & BENEFITS

- Cost and time-effective installation
- Product construction minimises the risk of penetrating the roof top finish
- Improved system aesthetics
- Robust, high quality recycled materials

LIGHT DUTY FRAMES

The Big Foot Systems Light Duty Frame range offers both standard and custom frames for Air Conditioning and small Air Handling Units. Delivered packaged to site, the frame components and leg assemblies can easily be handled. With an ever increasing number of HVACR manufacturers supplying products, our frames are dimensionally configurable at design stage, both in footprint and height.

TYPICAL APPLICATIONS

- AC (Splits & VRF/VRV)
- Air Handling Units
- Air Source Heat Pumps
- Compressors
- Supply & Extract Fans
- Attenuators
- Filters

FEATURES & BENEFITS

- Standard Frames supplied boxed
- Cost effective, prefabricated support system
- Versatile modular frameworks
- Quick to install, robust and secure

HEAVY DUTY SYSTEMS

The Big Foot Systems Heavy Duty range offers a robust cost-effective support alternative to on-site concrete constructions which aids load dispersal and are non-penetrative. With minimal on-site assembly and easy positioning, the HD Cube and HD Beam offer a standardised approach with Custom designs for larger plant and services.

TYPICAL APPLICATIONS

- Chillers
- Plant Rooms
- Air Handling Units
- Generators
- Packaged Plant
- Heavy Pipes & Steels
- Armoured Cabling

FEATURES & BENEFITS

- Optional fully-certified independent warranty
- In-house CAD Service
- Finite Element Analysis (FEA)
- Wind loading performance calculation service available
- Cost and time effective on-site installation
- Prefabricated for consistent and controlled installations
- Ensures greater project design flexibility

SAFE ACCESS

The Safe Access range from Big Foot Systems provide low level standard modular walkways mounted on non-penetrative rubber feet, to custom fabrications requiring a more consultative approach necessitating detailed proposals and site surveys. Big Foot Systems detailed engineering drawings provide concise, economically engineered Safe Access solutions to fit within planned or existing rooftop services (complying with necessary safety standards).

TYPICAL APPLICATIONS

- Plant Maintenance
- Plant Inspection
- Roof Access
- Fire Escapes

FEATURES & BENEFITS

- Quick and simple, on-site assembly
- Flat packed for ease of transportation
- Health and safety regulation compliant
- Optional fully certified independent warranty
- Custom designs available



EXCEPTIONAL SERVICE. Havtech is dedicated to providing every customer with an exceptional experience. We work with you as partners to keep you informed. We have a deep commitment to meeting your schedule, and providing solutions that are accurate, timely, and reliable.

PARTS & AFTERMARKET SOLUTIONS Whether you are installing, maintaining or servicing an HVAC system, Havtech offers a complete line of quality parts, equipment and supplies to keep your system operating reliably and at peak performance. Our order handling efficiency at our state of the art, 35,000 square foot warehouse gets the right parts, equipment and supplies to you fast.

HAVTECH.COM OR CALL 240.568.0960

Disclaimer

The information contained in this brochure is based upon data we believe to be correct as of the publishing date, but no representation is made herein, nor should any be implied regarding the accuracy of any such information and Havtech assumes no liability for any errors or omissions in any such information.

All specifications are subject to change without notice.

Please note that all products in this brochure may not be available at all times or locations.

201708.05